



News from the Farm

May 2008

BUSTIN' OUT ALL OVER

Of Leaf and Bloom

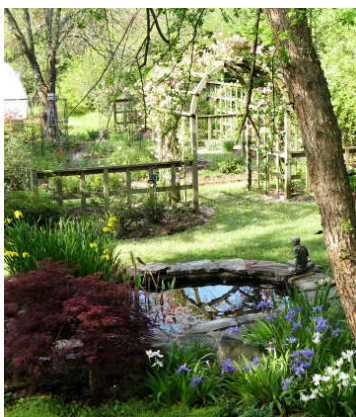
I have to admit that I am prejudiced: I think the gardens at White Wagon Farm are among the most lovely in Central Arkansas. (To prove my point, I've included photos I took in the past week.)

I love peering down pathways, admiring the various shades of green, and catching a young rabbit with a long green leaf in its mouth scooting under the youpon.

I love the riot of color provided by the annuals: the red geraniums along side the brilliant yellow portulaca, overlapping the purple, fuchsia, and pink of the wave petunias.

I love the pond with the curved arbor and the Old Blush rose blooms mirrored in it.

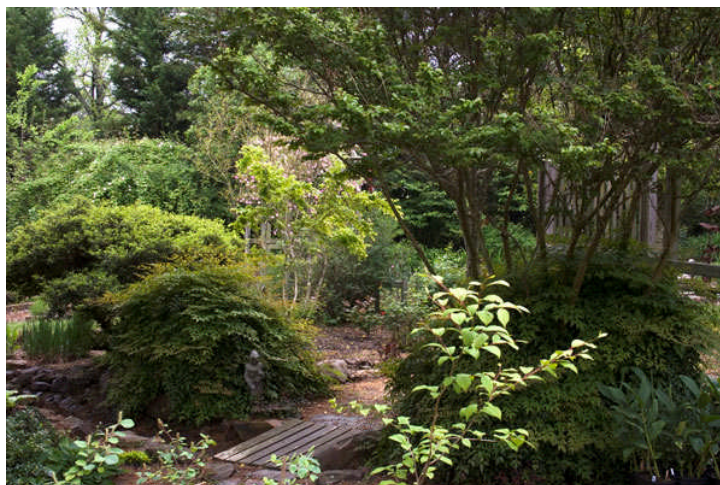
I just love Spring!



Here's a little quiz: What do *Tagetes lucida*, *Cuphea hyssopifolia*, *Tithonia*, *Salvia leucantha*, *Ruellia brittoniana*, and *Sanvitalia procumbens* have in common?

Their common names are Mexican mint marigold, Mexican heather, Mexican sunflower, Mexican sage, Mexican petunia, and Mexican creeping zinnia.

Happy Cinco de Mayo!
Kathy



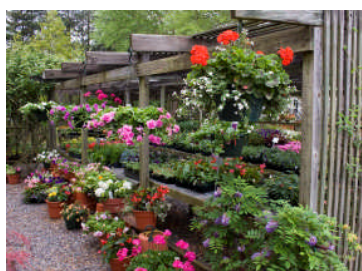
Shades of Green

Resistable Plants

We are often asked for recommendations for plants that are resistant to deer, rabbits, slugs, etc.. Although nothing is foolproof, the plants below have proven to be at least not at the top of the favorites list for Bambi.

Achillea -- Yarrow; Aegopodium -- Bishop's Weed;
Agastache -- Anise Hyssop; Ajuga -- Creeping Bugleweed;
Alchemilla -- Lady's Mantle; Allium -- Chives; Amsonia -- Blue Star; Artemisia -- Wormwood; Asclepias -- Butterfly Weed; Belamcanda -- Blackberry Lily; Berberis thunbergii -- Barberry; Buddleia davidii -- Butterfly Bush; Buxus -- Boxwood; Caryopteris -- Bluebeard; Narcissus -- Daffodil; Dicentra -- Bleeding Hearts; Digitalis -- Foxglove; Euphorbia -- Spurge; Ferns; Filipendula -- Dropwort; Galium -- Sweet Woodruff; Geranium -- Hardy, Scented, Cranesbill; Helleborus -- Hellebore; Hypericum -- St. John's Wort; Hyssopus -- Hyssop; Iris siberica -- Siberian Iris; Lamium -- Dead Nettles; Lavandula -- Lavender; Ligustrum -- Privet; Lysimachia -- Whorled Loosestrife; Melissa -- Lemon Balm; Mentha -- Mint; Monarda -- Bee Balm; Narcissus -- Daffodil; Nepeta -- Catnip; Origanum -- Oregano; Paeonia -- Peony; Perilla; Perovskia -- Russian Sage; Rosmarinus -- Rosemary; Salvia -- Meadow Sage; Santolina -- Lavender Cotton; Satureya -- Winter Savory; Stachys -- Lamb's Ear; Tanacetum -- Tansy; Teucrium -- Germander; Thymus -- Thyme; Verbascum -- Mullein; Verbena -- Vervain

This is not a complete list, nor a guarantee that your plants won't end up as salad, but they have proved to be less appetizing to the grazing set than hostas, for example.



Baskets and Color Pots

Nursery & Gallery Hours

Mar - June & Sept - Nov
Monday – Saturday
9:00 – 5:00
March - May
Also Open Sun 1:00 - 5:00

Mid-Summer and Mid-Winter
Open by appt. only
(501) 851- 4608